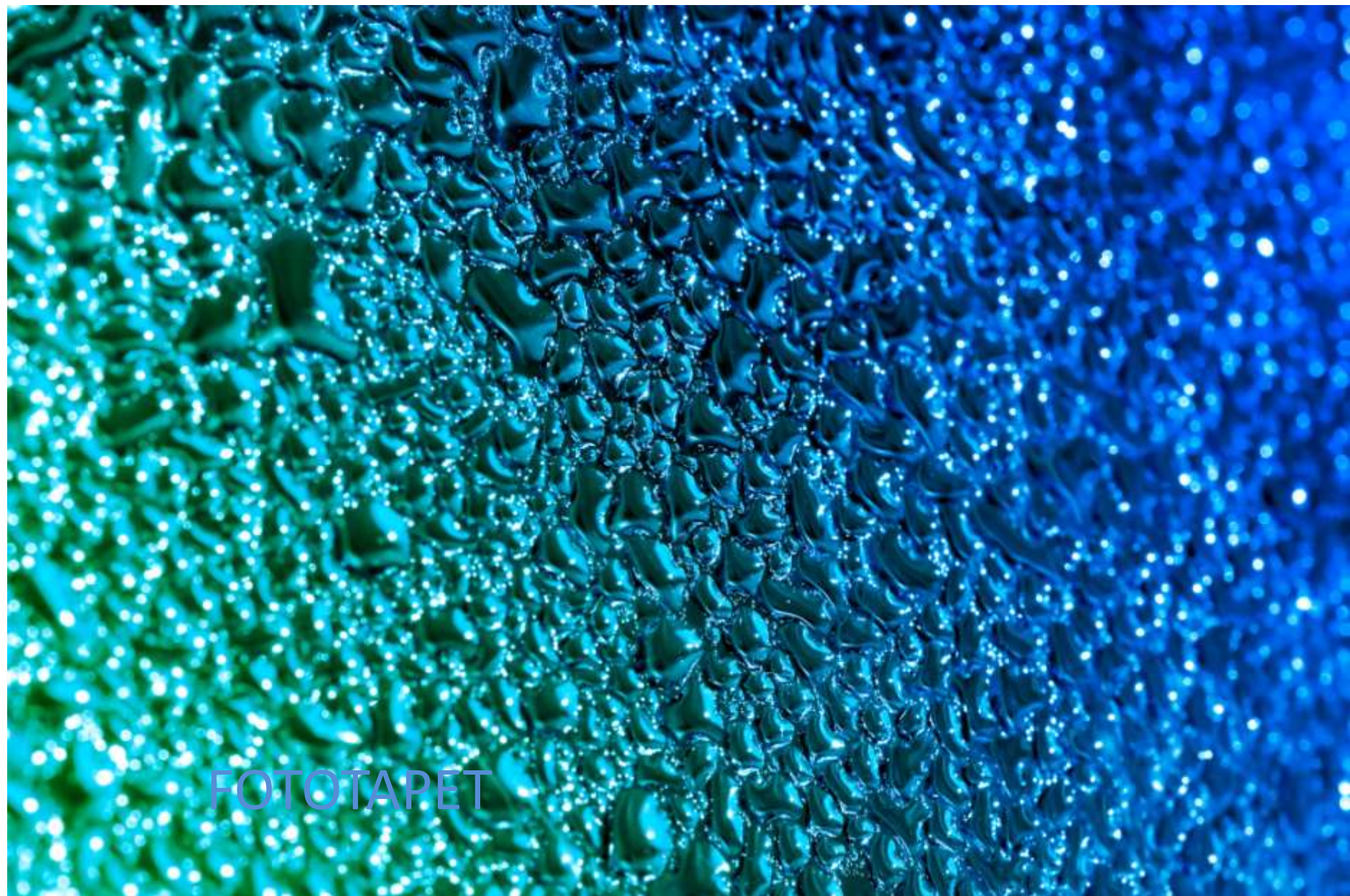


FOTOTAPET





FOTOTAPET

The image features a dark blue background with a pattern of glowing, semi-transparent squares in various shades of blue and white. The squares are scattered across the frame, creating a bokeh-like effect. In the center, the word "FOTOTAPET" is written in a light blue, sans-serif font.

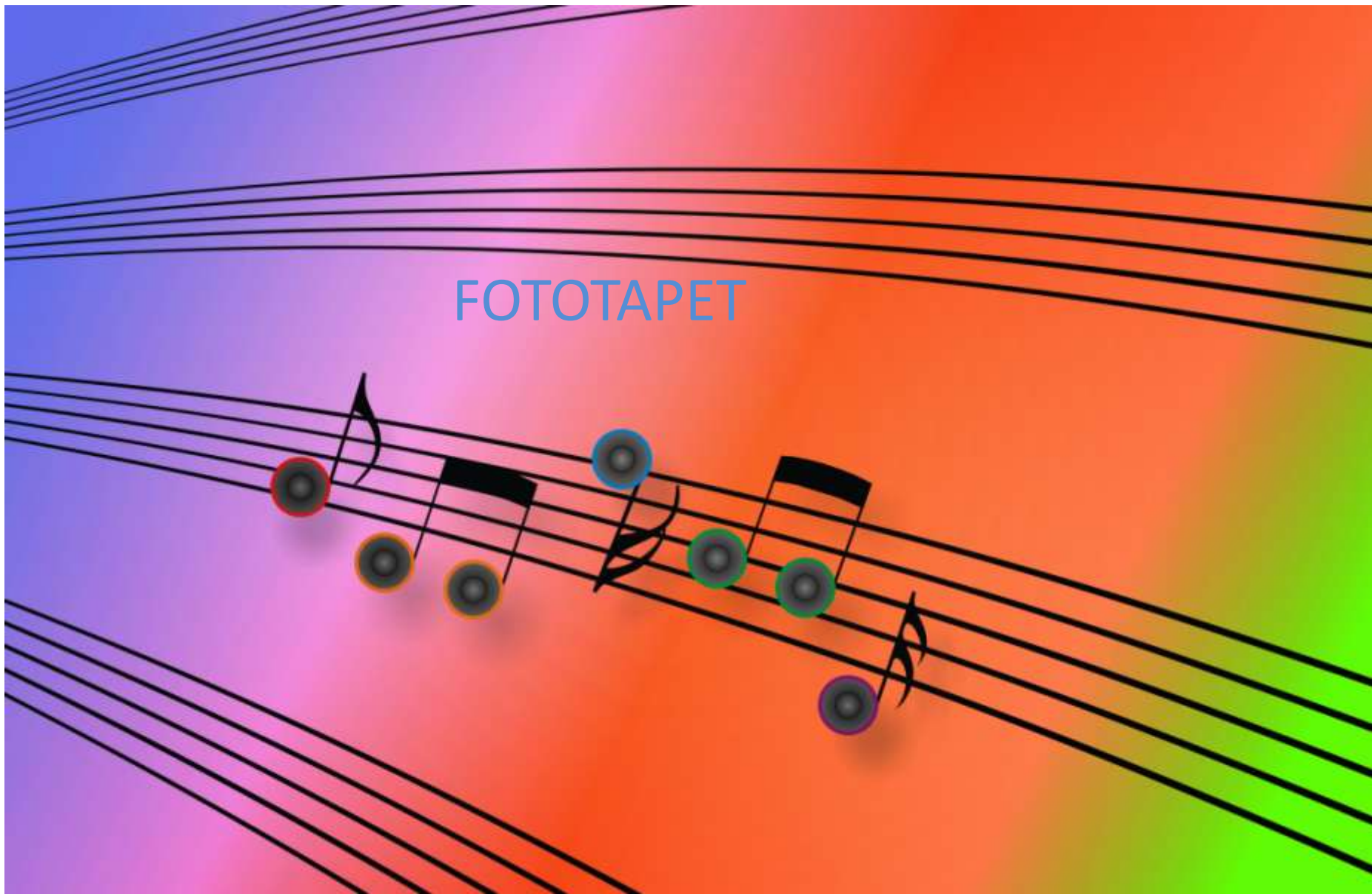
FOTOTAPET





FOTOTAPET

# FOTOTAPET









FOTOTAPET

# FOTOTAPET

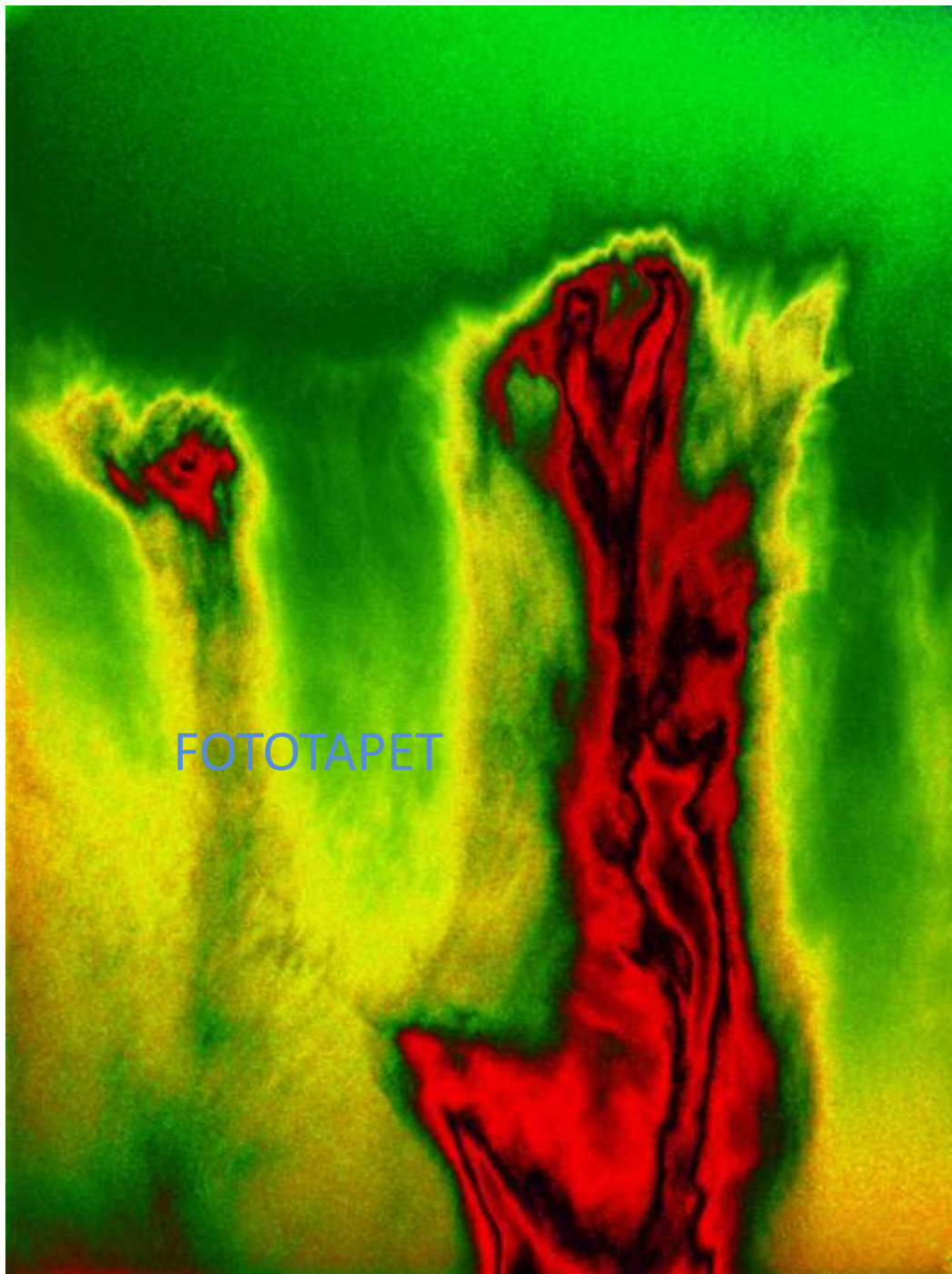
The background of the slide is a light blue gradient. It features several overlapping, semi-transparent blue circles of various sizes. A thick, dark blue wavy line starts from the bottom left corner and curves upwards and to the right, passing through the circles.

The image features a complex, abstract pattern of overlapping, teardrop-shaped elements. These shapes are rendered in various shades of beige, cream, and light brown, set against a darker, muted brown background. The overall effect is a dense, organic, and somewhat marbled texture. The shapes vary in size and orientation, creating a sense of movement and depth. The lighting appears to come from the left, casting soft shadows and highlighting the edges of the shapes, which adds to the three-dimensional quality of the pattern.

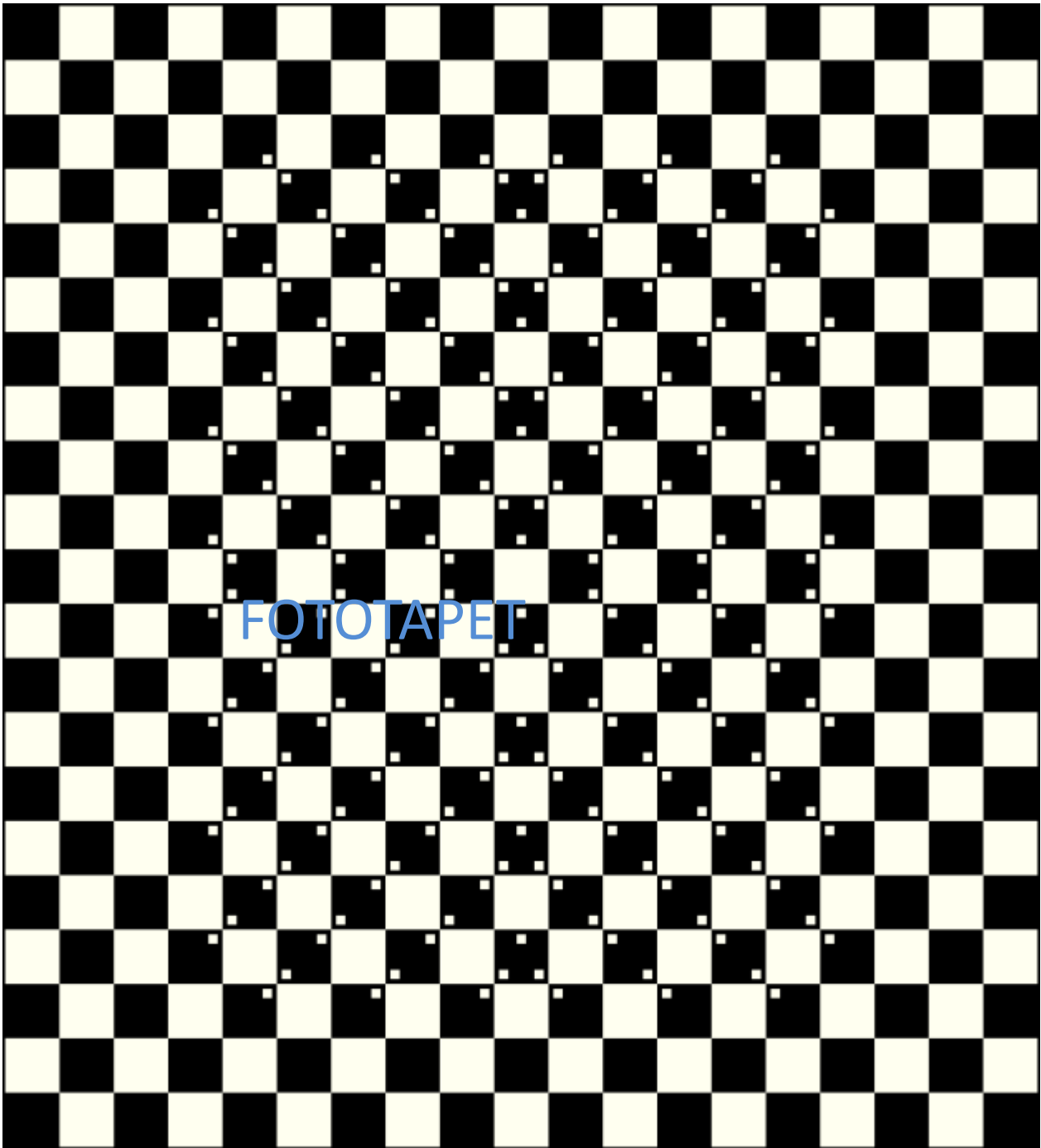
FOTOTAPET

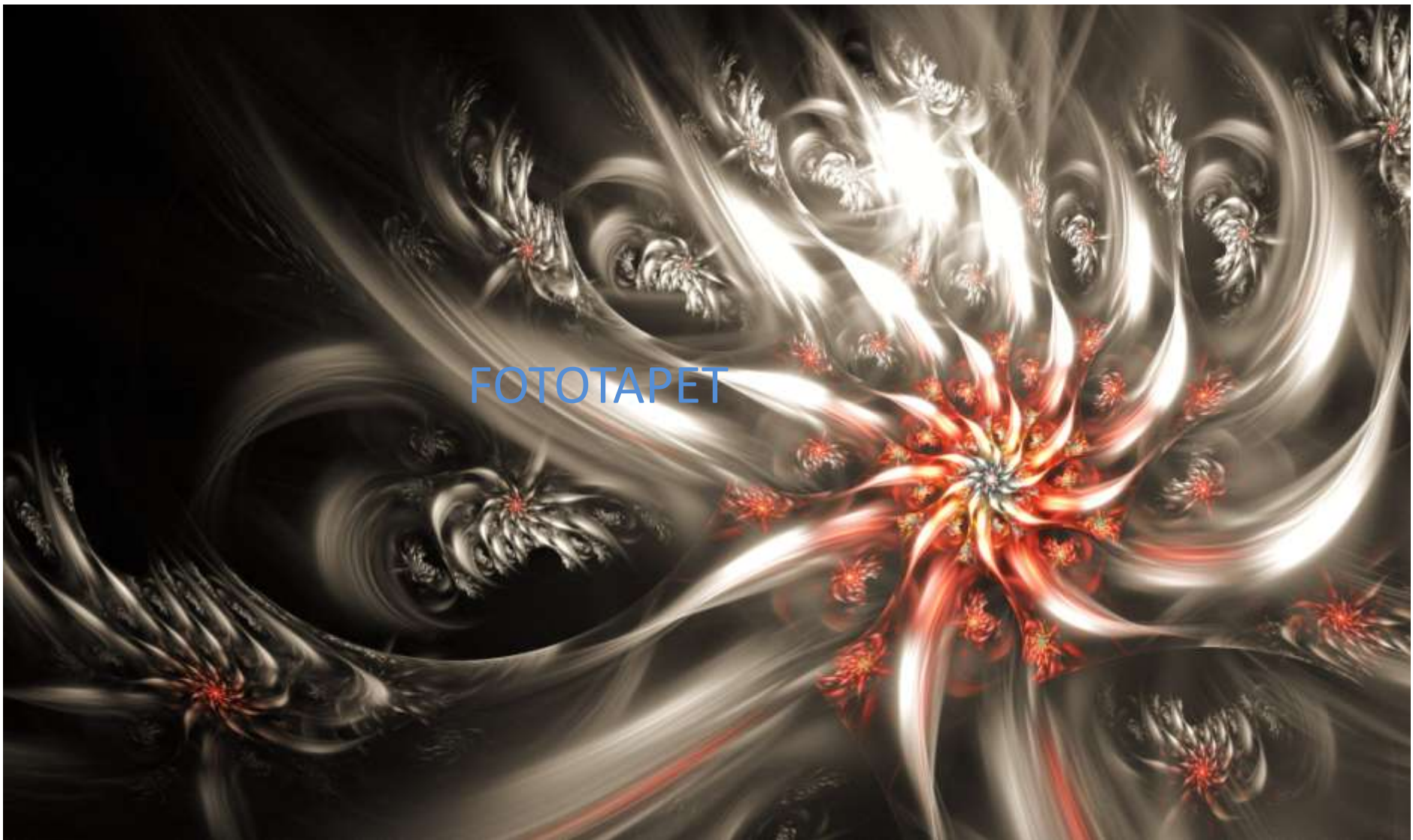


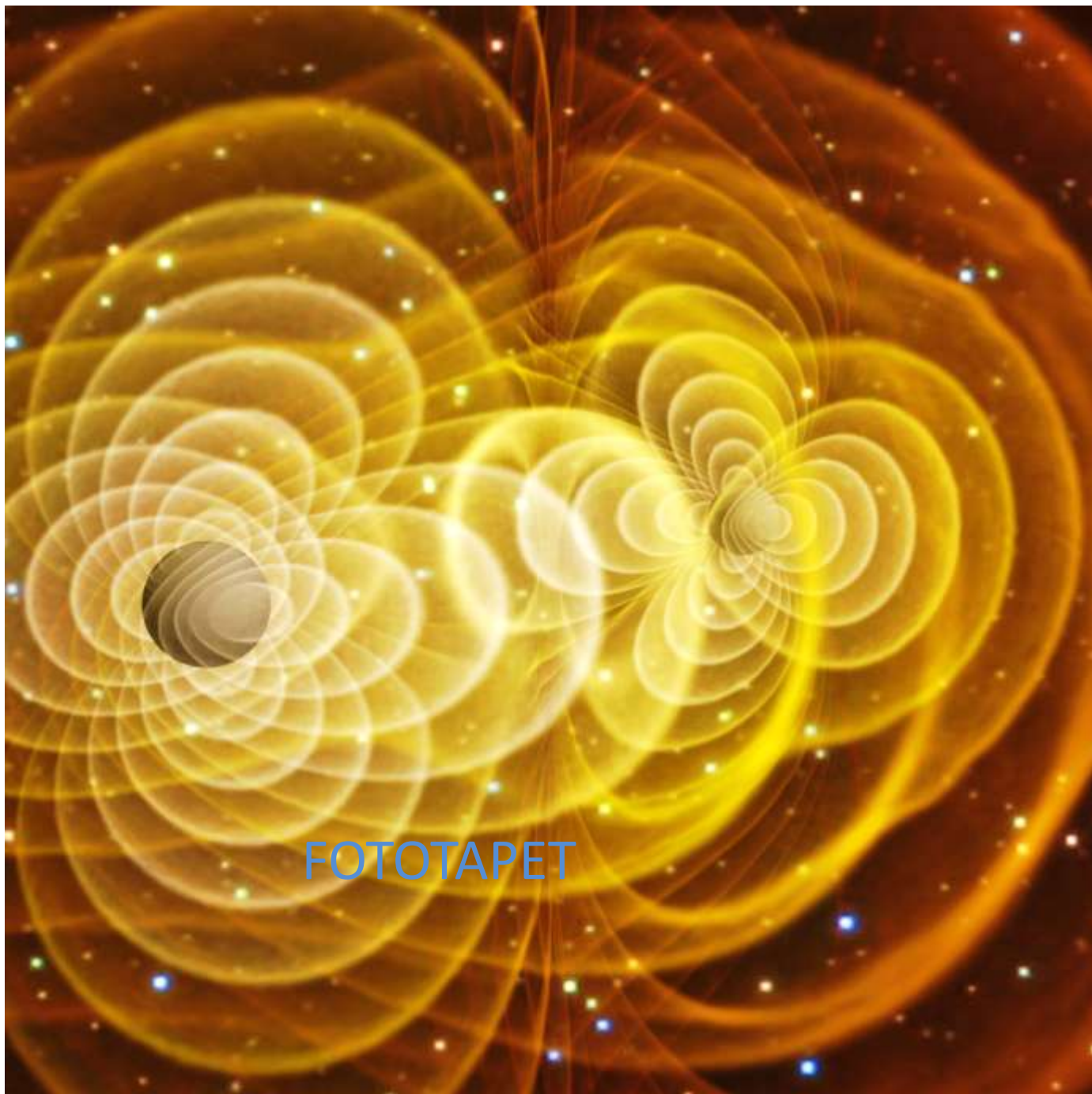
FOTOTAPET



FOTOTAPET







FOTOTAPET

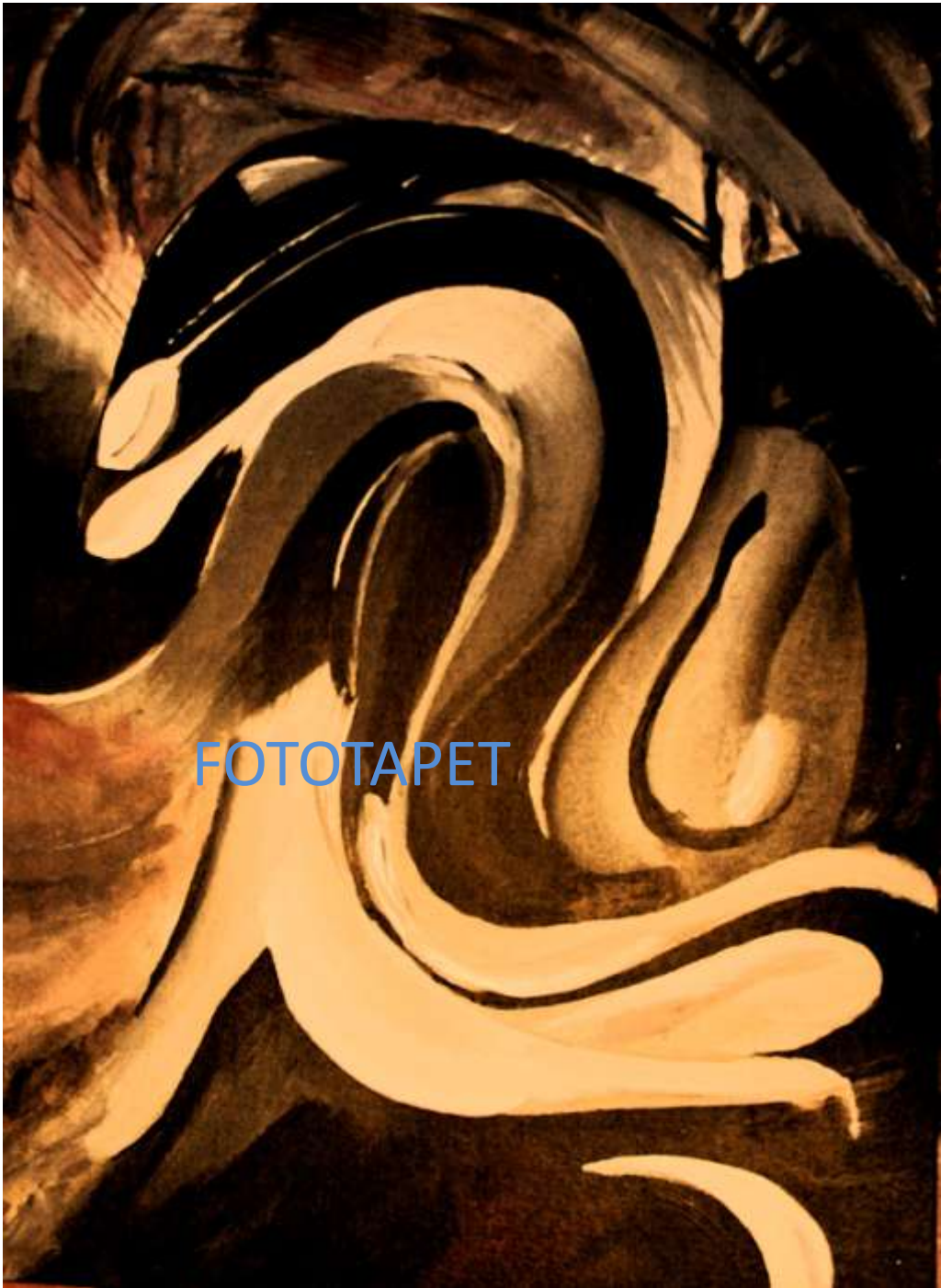


FOTOTAPET





FOTOTAPET



FOTOTAPET

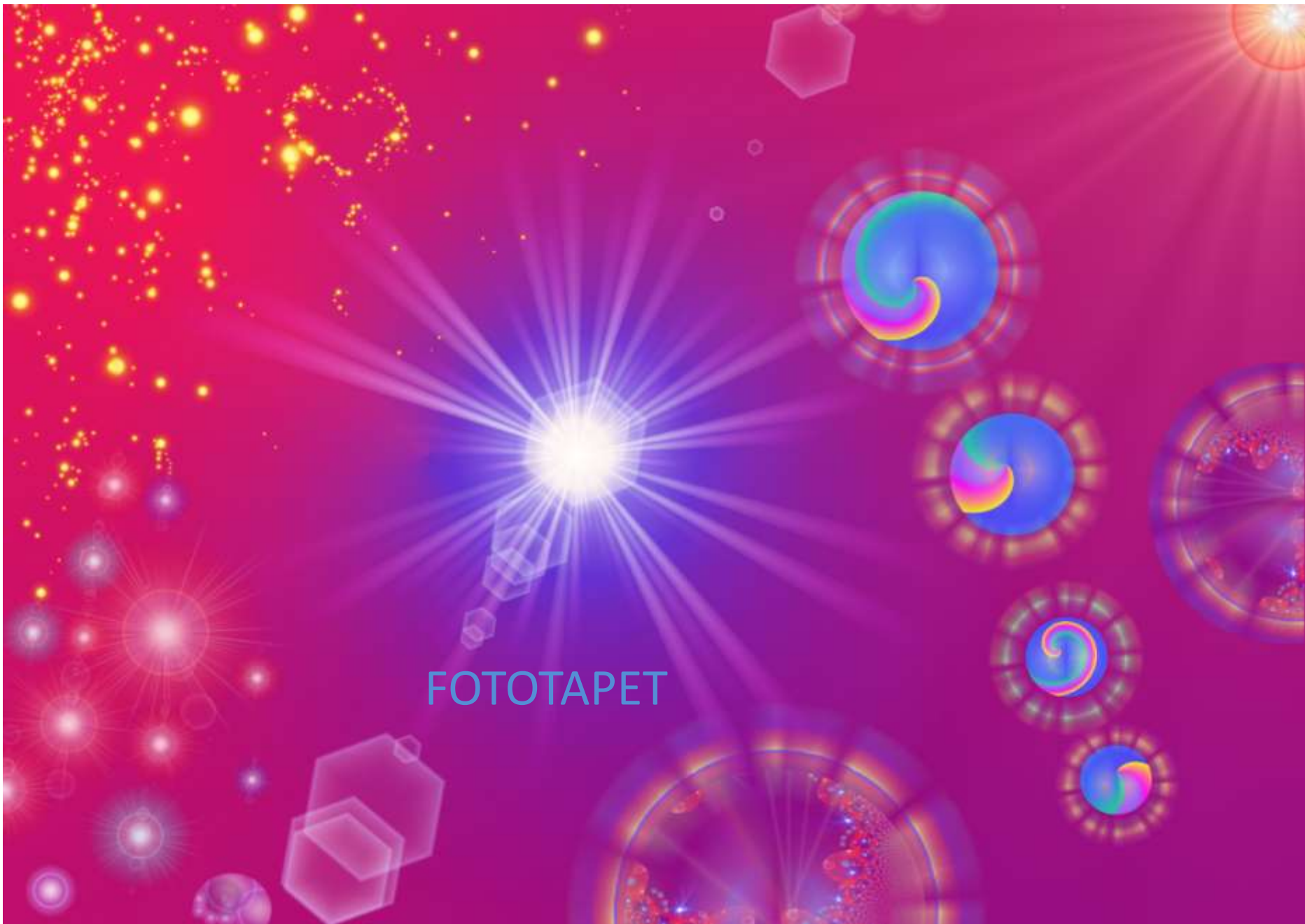
FOTOTAPET





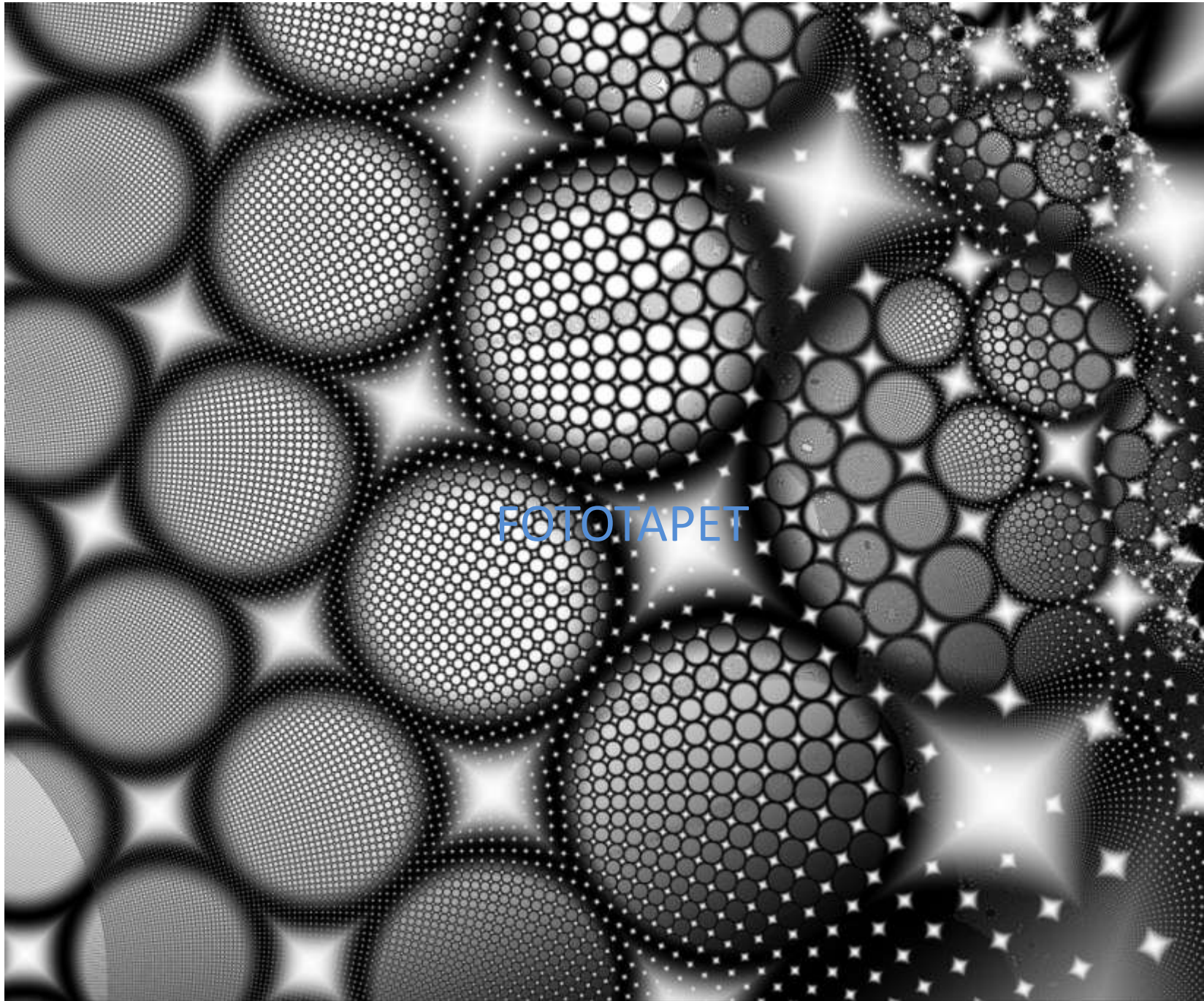


FOTOTAPET









FOTOTAPET